

RIBBLE VALLEY BOROUGH COUNCIL (RIMINGTON)

TREE PRESERVATION ORDER NO. 4, 1975

FIRST SCHEDULE

<u>No. on Map</u>	<u>Description</u>	<u>Situation</u>
-------------------	--------------------	------------------

Trees Specified Individually  
(encircled in black on the map)

T1	Ash	NGR 83184656
----	-----	--------------

Trees Specified by Reference to an Area  
(within a dotted black line on the map)

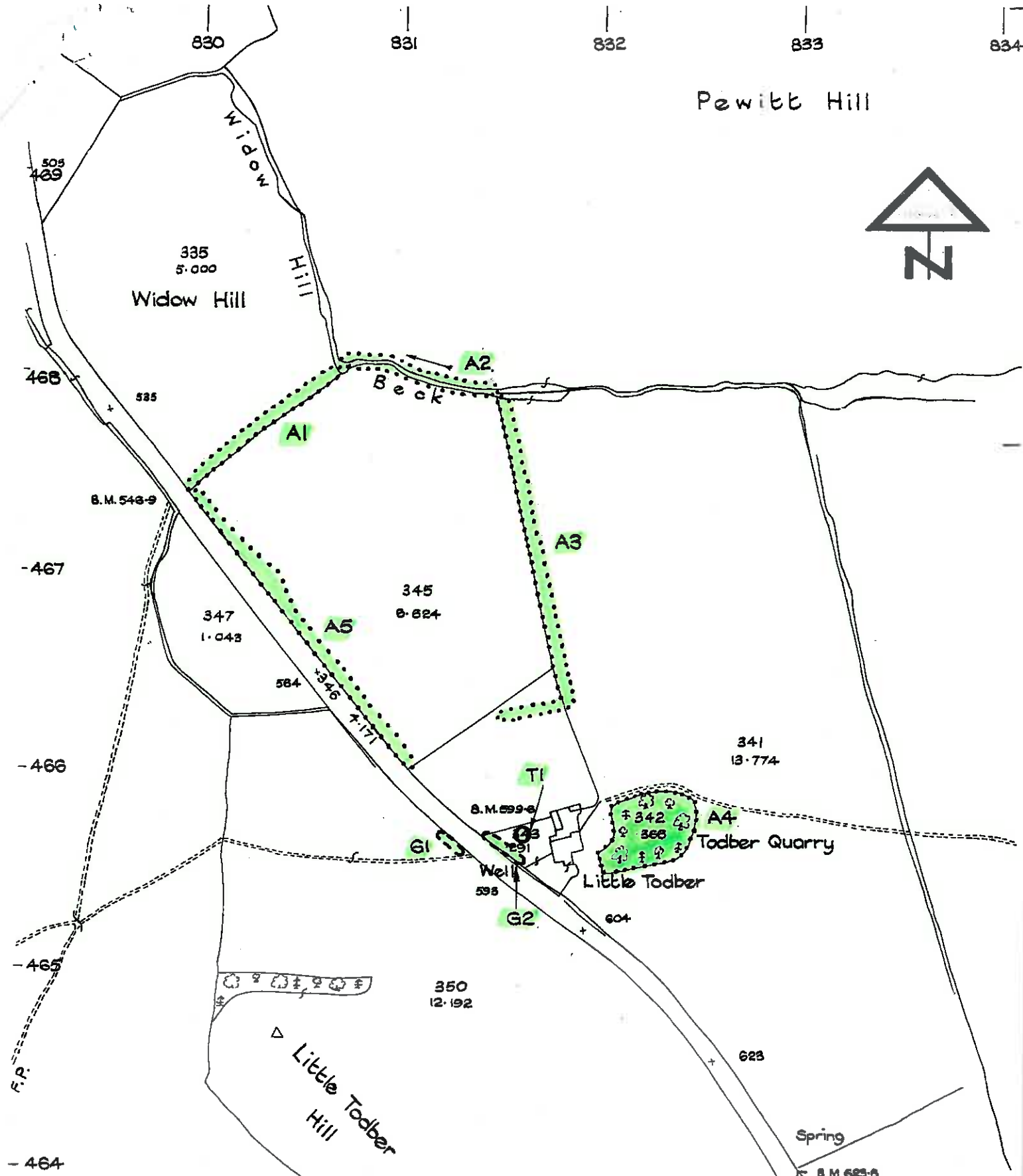
A1	Ash, Holly and Thorn	NGR 83044678
A2	Willow, Ash, Oak, Larch, Holly	NGR 83114679
A3	Ash, Holly, Willow, Thorn, Alder	NGR 83184669
A4	Ash, Horse Chestnut, Sycamore	NGR 83254656
A5	Birch, Spruce, Poplar, Alder, Horse Chestnut	NGR 83064669

Groups of Trees  
(within a broken black line on map)

G1,	1 Ash, 2 Horse Chestnut	NGR 83144655
G2	3 Sycamore, 1 Ash	NGR 83194655

Woodlands  
(within a continuous black line on map)

None



Ribble Valley Borough Council (Little Todber, Rimington)  
Tree Preservation Order No. 4 1975.

scale
1:2500
drawing number
8/5/1
reference
date
May 1975

Charles Wilson, MA, DA(Manc), Dip.Arch, RIBA, MRTPI, Chief Architect & Planning Officer,  
Ribble Valley Borough Council, Princess Avenue, Clitheroe BB7 2AL (STD 0200) 25111