

## **RIBBLE VALLEY SETTLEMENT HIERARCHY**

### **Executive Summary Observations**

The summary below is derived from the more detailed analyses of the contextual and demographic data set out in Appendix 1 and the local services and facilities data described in Appendix 2.

- Clitheroe stands out as the most significant settlement within the Borough, with the best provision of services and facilities
- The next two settlements, Longridge and Whalley also stand out from all other settlements in terms of provision across all the various service and facilities categories. While Whalley is smaller than some other settlements, such as Langho and Wilpshire, they have significantly poorer service and facility provision. In Wilpshire's case this could be due to the services in the area falling into adjacent parts of Blackburn.
- Eleven settlements clustered towards the bottom of the hierarchy all scored poorly across nearly all categories. These are: Osbaldeston, Tosside, Copster Green, Pendleton, Sawley, Calderstones, Newton, Wiswell, Rimington, Worston and Holden. Only in terms of community facilities did a few of this group, Pendleton, Newton and Rimington, have good or reasonable provision.

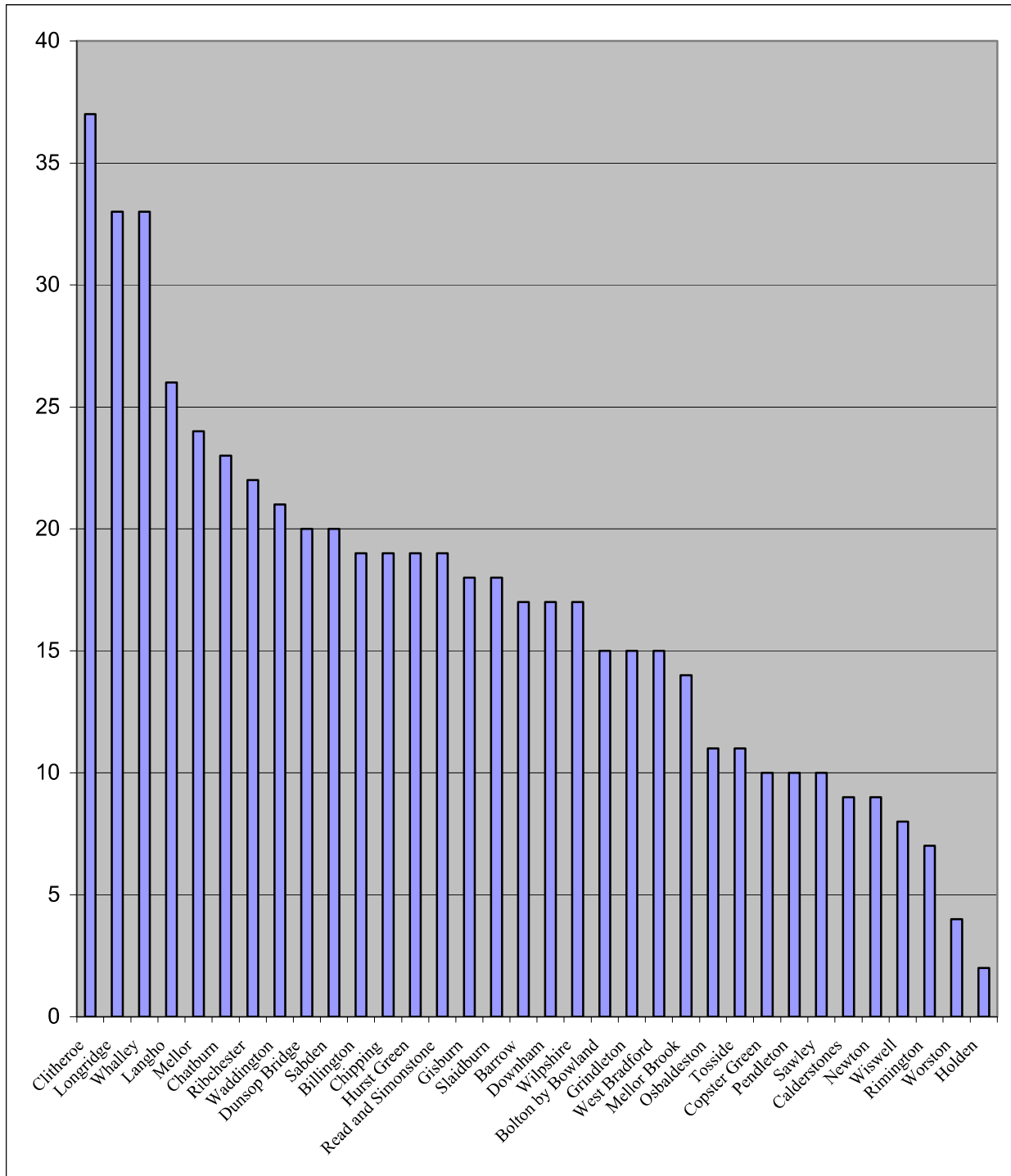
This leaves 21 remaining settlements within the hierarchy with a spectrum of provision between these two extremes. There are no significant "step changes" within this group, however those towards the top of this group, scoring 20 and above points were considered the initially most likely to possibly act as more local centres. It could be argued that this 20 point limit is somewhat arbitrary however.

- This group contains: Langho, Mellor, Chatburn, Ribchester, Waddington, Dunsop Bridge and Sabden. Most of this group, perhaps unsurprisingly, have relatively large populations of over 1000, with only Waddington and Dunsop Bridge being smaller.
- Within this group of 7 the generally best served settlement across the range of services and facilities was Langho with only its community facilities significantly poorer than the other settlements in the group. However, along with Waddington and Dunsop Bridge, its house prices are towards the higher range within the Borough. Langho also fell into the relatively high commuting group, presumably because of its good transport facilities. It also rated towards the lower end of the economic activity scale.
- Mellor and Chatburn also had good service and facility provision, with Chatburn having particularly good community and employment ratings but no GP. Chatburn also has a higher number of retired people than Mellor and was a relatively high commuting settlement.
- Mellor rated highly in part because of having a GP and good convenience facilities. It also has relatively lower house prices than the other settlements in the group.
- Of the other settlements in this group it is difficult to easily separate them; Ribchester rates highly for its education provision, but has no GP and is relatively high commuting. Waddington has good employment ratings, lacks a GP and has relatively high house prices. It also has the lowest proportion of residents under 24 years and the highest over 64 years

and is a relatively low commuting settlement. Sabden also generally has reasonable services and facilities and a GP, but rated lower on its community facilities. Dunsop Bridge, significantly the smallest of the group in terms of population size, has a good spread of provision, better than many larger settlements in the general hierarchy, but rates lower on employment within the group of 7. It is a high commuting settlement with the highest proportion of young people in the group and relatively high house prices.

- **In summary this hierarchy shows that it is difficult to definitely distinguish, using the methodology employed, those settlements which could act as more local service centres in terms of future planning policy. It is possible that more detailed analysis may show which are best able to act as local service centres, or it may be that there genuinely is little real difference between many settlements.**
- **The position of the three key centres of Clitheroe, Longridge and Whalley is clear and those smaller settlements towards the tail of the hierarchy could also be argued to be unable to act as providers of services to a wider area. However this leaves a relatively large group of settlements of an intermediate type, many of which could act as more local centres. It may be that other factors not included here, for instance the availability of suitable developable land or access to main roads, or other factors, may help to clarify the position.**
- **Further analysis could involve options such as:**
  - **Focusing all development on the three main centres**
  - **Allowing all settlements to grow without particular policy constraint**
  - **Considering how each settlement would be allowed to develop with current policies in force.**

**Chart 1 Ribble Valley Settlement Hierarchy Summary**



(Total Points Across All Groups of Provision/Facilities (Max =37))

**Table 1. Summary Table**

	<b>Trans- port</b>	<b>Conv'ce Services</b>	<b>Comm'y Facilities</b>	<b>GP Surgery</b>	<b>Education</b>	<b>Employe't</b>	<b>Total</b>
	<b>Max =6</b>	<b>Max=6</b>	<b>Max=10</b>	<b>Max=2</b>	<b>Max=8</b>	<b>Max=5</b>	<b>Max= 37</b>
<b>Barrow</b>	4	4	4	-	2	3	17
<b>Billington</b>	4	2	6	1	3	3	19
<b>Bolton by B</b>	-	4	6	2	2	1	15
<b>Calderstones</b>	3	2	2	-	-	2	9
<b>Chatburn</b>	4	4	10	-	2	3	23
<b>Chipping</b>	4	4	8	-	2	1	19
<b>Clitheroe</b>	6	6	10	2	8	5	37
<b>Copster Gn</b>	4	-	2	-	2	2	10
<b>Downham</b>	4	4	7	-	2	1	17
<b>Dunsop Br</b>	3	4	8	2	2	1	20
<b>Gisburn</b>	4	4	6	-	2	2	18
<b>Grindleton</b>	4	-	6	-	3	2	15
<b>Holden</b>	-	1	-	1	-	-	2
<b>Hurst Green</b>	4	4	8	-	2	1	19
<b>Langho</b>	6	6	6	2	3	3	26
<b>Longridge</b>	4	6	10	2	6	5	33
<b>Mellor</b>	4	6	8	2	2	2	24
<b>Mellor B'k</b>	4	4	4	1	-	1	14
<b>Newton</b>	3	-	6	-	-	-	9
<b>Osbaldeston</b>	2	2	4	-	2	1	11
<b>Pendleton</b>	-	-	8	-	-	2	10
<b>Read and Simonstone</b>	4	6/4	6/6	-	2/2	1/1	19/17
<b>Ribchester</b>	4	4	8	-	4	2	22
<b>Rimington</b>	-	-	6	-	-	1	7
<b>Sabden</b>	4	4	6	2	2	2	20
<b>Sawley</b>	4	-	4	-	1	1	10
<b>Slaidburn</b>	3	4	6	2	2	1	18
<b>Tosside</b>	3	4	4	-	-	-	11
<b>Waddington</b>	4	4	8	-	2	3	21
<b>West Bradford</b>	4	-	6	-	4	1	15
<b>Whalley</b>	6	6	10	2	5	4	33
<b>Wilpshire</b>	6	2	6	-	-	3	17
<b>Wiswell</b>	4	-	2	-	-	2	8
<b>Worston</b>	-	-	4	-	-	-	4

## **1. Introduction**

This settlement hierarchy has been produced to help make informed and rational decisions about the most appropriate and sustainable location of future development, whether it be housing, schools, employment, shops or other facilities within the many settlements in Ribble Valley.

To do this we need to be able to sensibly describe places from a variety of standpoints against a justifiable and reasonable set of criteria. Settlement hierarchies are a part of the way we do this by taking several pieces of evidence and weighting this evidence to give a rounded picture of all the diverse places in the area. This process should help reveal those settlements best placed for future development, all within the overall framework established by various government policies.

In developing this hierarchy local best practice has been used, specifically the structure developed within the “Settlement Hierarchy and Sustainable Rural Settlements” produced recently by Pendle Borough Council, a nearby authority with an analogous landscape and settlement profile.

## **2. National Planning Policy**

Government places great emphasis on future development and places being sustainable. The key principles of sustainability and planning are outlined in Planning Policy Statement 1 (Delivering Sustainable Development). Specifically:

“development plans should seek to provide improved access for all to jobs, health, education, shops, leisure and community facilities, open space, sport and recreation, by ensuring that new development is located where everyone can access services or facilities on foot, by bicycle or public transport rather than by having to rely on the car, while recognising that this may be more difficult in rural areas”

While understanding that it is inherently difficult to come to absolutely objective judgements about sustainability a sufficient variety of different types of information about the various settlements in Ribble Valley already exists to help to potentially distinguish between those capable of receiving new development and those less well placed. It should also be emphasised that, as mentioned above, the reliance on the car in rural areas such as ours is likely to remain an important part of access calculations.

Another important piece of central planning policy is Planning Policy Statement 7 (Sustainable Development in Rural Areas) which allows for development away from the larger settlements or “Key Service Centres” as defined in previous settlement hierarchies within the Joint Lancashire Structure Plan (JLSP). PPS7 acknowledged that some limited development could happen within or around non Key Service Centres to help them retain their vitality and their sustainability and prevent them from becoming commuter-generating dormitories. This settlement hierarchy aims to help define which settlements these may be.

Planning Policy Guidance Note 13 (Transport) broadened the concept of accessibility beyond access to the car and emphasised that new development should offer realistic public transport, walking and cycling options in addition to the car, again recognising the particular difficulties and pressures of living and working in rural areas. This is important as significant numbers of people in the Borough do not have access to a car.

### **3. Regional Planning Policy**

The imminent Regional Spatial Strategy (RSS) for the North West suggests in Policy RDF2 that local authorities should define their own Key Service Centres (KSC) according to locally derived criteria.. Earlier regional planning strategies, such as the Joint Lancashire Structure Plan (JLSP), had included definitive lists of KSCs, in Ribble Valley's case it defined Clitheroe, Longridge and Whalley as the main Ribble Valley Key Service Centres. The RSS contains no list of Key or other Service Centres, nor a definitive methodology for identifying them.

The RSS defines Key Service Centres as places that should “act as service centres for surrounding areas providing a range of services which should include retail, leisure, community, civic, health and education facilities and financial and professional services; and have good public transport links to surrounding towns and villages, or the potential for their development and enhancement”.

Local Service Centres are places that are smaller than the Key Service Centres but which nevertheless provide some services to their surrounding area and where small scale new development could support their sustainability. This hierarchy will try to help identify both those Key Service Centres and those places that are already are, and possible could become, Local Centres for the purposes of development.

### **4. Sustainable Rural Settlements**

The Lancashire Rural Delivery Pathfinder Action Plan sets a target for the provision of services in the countryside, specifically that by 2016 the proportion of the population within 1 km of five basic services (GP, primary school, food shop, post office and bus stop) should not have declined from its 1996 benchmark of 73%. As such the retention of services is seen as key to the long-term sustainability of a place. DEFRA's definition of sustainable communities emphasises the need for such places to have good local services.

However the recently published Taylor Report on Rural Affordable Housing criticised the current application of accepted sustainability approaches to rural settlements as too rigid, one dimensional and inflexible, discouraging vital development by defining viable settlements as unsustainable and thereby condemning them to futures as dormitories.

### **5. Methodology**

The bulk of the evidence used to develop the conclusions below was taken from the 2006 Ribble Valley Settlement Audit which collected a wide variety of data already produced in various national and other surveys and combined this with site assessment visits by planning staff.

By “settlement” we mean by that those areas principally defined within the settlement boundaries as mapped in the Districtwide Local Plan of 1998. These range from large towns such as Clitheroe and Longridge to smaller villages such as Worston.

However some of the settlements in the area were too dispersed and or too small or do not have agreed boundaries attached to them. They were also host to very few services. These settlements listed below were therefore excluded from inclusion within the hierarchy as places for future significant development.

These are:

Bashall Eaves  
Chaigley  
Little Town  
Bay Gate  
Whitwell  
Brockhall Village and Old Langho  
Hesketh Lane  
Clayton Le dale  
Knowle Green and Ward Green Cross  
Lands End and Harrop Fold  
Great Mitton  
Paythorne  
Newsholme  
Horton

It should also be mentioned that Area Policy A2 in the Districtwide Local Plan specifically refers to the Brockhall Hospital site, now known as Brockhall Village. While no formal settlement boundary exists as for other settlements, it could be viewed that the boundary of policy A2 could be used as such, although this was specifically drawn in relation to the former hospital's re-development. The policy also included the encouragement of employment opportunities to replace those lost with the closure of the hospital facilities. The settlement has a larger population than some settlements that have been included in the hierarchy, but however its current facilities and services would put it at the lower end of the scale. Its position in relation to a settlement hierarchy needs to be determined, however on the basis of this analysis it would not fall within the scope of a defined settlement.

Obviously data can become outdated with time and therefore the hierarchy presented below represents a particular point in time. The 2006 data has been augmented where possible to include more recent changes, for instance the recent post office rationalisations, and accessibility criteria have used the most up to date bus schedules.

Note 1. For the purposes of this study the contiguous settlements of Read and Simonstone have been regarded principally as one as they are both bounded within one settlement boundary

## **6. Data**

In constructing the hierarchy two main types of data have been used:

- A. Contextual and demographic information
- B. Information on local services, facilities and accessibility related data.

### **6A. Contextual and Demographic Information**

The 2006 Ribble Valley Settlement Audit collected a variety of background information from the 2001 National Census, Land Registry and a variety of other sources. From this some elements were selected to help define the various different settlements within the Borough and identify their different characteristics.

This information comprises:

**Population Size** – this fundamental statistic shows how many people the settlement supports and will need to provide services for.

**Population Structure** – the different age ranges of a settlement’s residents will also indicate what kind of services will be needed, especially if there is a concentration of one particular age group.

**Percentage of the Population Economically Active** – This statistic points out both what proportion of local people are eligible for work and what proportion are dependent, again helping to show what services the settlement will need to provide or have access to.

**Percentage Employed** – this points up in more detail how many local people actually have a job

**Average House Price** – this indicates the relative affordability of houses in each settlement, a key element in creating a genuinely sustainable and inclusive community.

**Travel to Work Flows** – this shows how much commuting is generated by each settlement and how many act as dormitories with residents working elsewhere.

This information is presented and analysed in detail in Appendix 1

## **6B. Local Services and Facilities**

This information was collected for each settlement across several different themes to try to reflect the variety of local community needs including: transport, convenience, community facilities, health, education and employment. A total of eighteen different criteria were used within the six themes above and were scored for each settlement. Most were selected according to sources outlined in Appendix 3. Detailed scorings and analysis of these facilities and services are outlined in Appendix 2.



## APPENDIX 1 – Contextual and Demographic Data

### A1. Tables

**Table 2 Demographic**

	<b>Population Size</b>	<b>0 – 24 yrs</b> (% of total)	<b>25 – 64</b> (% of total)	<b>Over 64</b> (% of total)
<b>Barrow</b>	658	169 (28%)	380 (58%)	105 (16%)
<b>Billington</b>	1544	426 (28%)	895 (60%)	223 (14%)
<b>Bolton – by -B</b>	497	121 (24%)	297 (60%)	79 (17%)
<b>Calderstones</b>	585	173 (29%)	362 (62%)	50 (8.5%)
<b>Chatburn</b>	1104	306 (29%)	572 (52%)	226 (20%)
<b>Chipping</b>	786	224 (28%)	41 (56%)	121 (15%)
<b>Clitheroe</b>	14690	4469 (30%)	7672 (52%)	2544 (17%)
<b>Copster Green</b>	391	84 (21.5%)	250 (64%)	57 (18%)
<b>Downham</b>	216	62 (28%)	121 (57%)	33 (15%)
<b>Dunsop Bridge</b>	159	55 (35%)	81 (51%)	23 (14%)
<b>Gisburn</b>	213	65 (30%)	119 (56%)	29 (14%)
<b>Grindleton</b>	425	97 (23%)	251 (59%)	77 (18%)
<b>Holden</b>	216	47 (22%)	134 (62%)	35 (16%)
<b>Hurst Green</b>	266	57 (21%)	146 (55%)	63 (24%)
<b>Langho</b>	2303	589 (26%)	1265 (55%)	449 (19%)
<b>Longridge</b>	7041	2091 (30%)	3813 (54%)	1137 (16%)
<b>Mellor</b>	1487	341 (23%)	810 (54%)	336 (23%)
<b>Mellor Brook</b>	457	106 (23%)	276 (60%)	75 (16%)
<b>Newton</b>	248	62 (25%)	149 (60%)	37 (15%)
<b>Osbaldeston</b>	251	68 (27%)	133 (53%)	50 (20%)
<b>Pendleton</b>	198	40 (20%)	108 (55%)	53 (27%)
<b>Read and Simonstone</b>	1383 / 895	369 / 220 ( 27% / 25%)	756 / 512 (55% / 57%)	258 / 163 (19% / 18%)
<b>Ribchester</b>	1196	334 (28%)	656 (55%)	216 (17%)
<b>Rimington</b>	424	103 (24%)	249 (59%)	72 (17%)
<b>Sabden</b>	1364	373 (27%)	776 (57%)	215 (16%)
<b>Sawley</b>	307	86 (28%)	183 (60%)	37 (12%)
<b>Slaidburn</b>	341	95 (28%)	188 (55%)	58 (17%)
<b>Tosside</b>	138	44 (32%)	76 (55%)	18 (13%)
<b>Waddington</b>	880	189 (21%)	475 (54%)	216 (25%)
<b>West Bradford</b>	729	163 (22%)	406 (56%)	160 (22%)
<b>Whalley</b>	1717	407 (23%)	839 (49%)	471 (27%)
<b>Wilpshire</b>	2339	634 (27%)	1317 (56%)	388 (16%)
<b>Wiswell</b>	329	80 (24%)	202 (61%)	44 (13%)
<b>Worston</b>	109	32 (29%)	63 (58%)	14 (13%)

**Table 3. Economic Activity and Employment**

(percentages rounded to nearest whole percentage point)

	<b>% of Residents Economically Active</b>	<b>% of Residents in Employment</b>
<b>Barrow</b>	80%	79%
<b>Billington</b>	82%	80%
<b>Bolton – by -B</b>	84%	82%
<b>Calderstones</b>	71%	71%
<b>Chatburn</b>	83%	81%
<b>Chipping</b>	85%	83%
<b>Clitheroe</b>	80%	78%
<b>Copster Green</b>	81%	79%
<b>Downham</b>	83%	81%
<b>Dunsop Bridge</b>	85%	83%
<b>Gisburn</b>	83%	83%
<b>Grindleton</b>	82%	81%
<b>Holden</b>	84%	82%
<b>Hurst Green</b>	71%	69%
<b>Langho</b>	76%	75%
<b>Longridge</b>	84%	83%
<b>Mellor</b>	82%	80%
<b>Mellor Brook</b>	82%	80%
<b>Newton</b>	84%	82%
<b>Osbaldeston</b>	82%	80%
<b>Pendleton</b>	80%	79%
<b>Read and Simonstone</b>	81%	78%
<b>Ribchester</b>	84%	80%
<b>Rimington</b>	83%	83%
<b>Sabden</b>	82%	78%
<b>Sawley</b>	82%	81%
<b>Slaidburn</b>	84%	82%
<b>Tosside</b>	83%	83%
<b>Waddington</b>	82%	81%
<b>West Bradford</b>	82%	81%
<b>Whalley</b>	71%	71%
<b>Wilpshire</b>	79%	78%
<b>Wiswell</b>	80%	79%
<b>Worston</b>	80%	79%

Note 1: This information was derived from ward based geographic units rather than individual settlements (derived from the 2001 National Census on NOMIS)

Note 2.; NOMIS defines Economic Activity as all those people actually working plus people not in work but actively seeking it. Employment refers to those actually in paid work

**Table 4. Average House Prices (2006)**

	<b>Average House Price (£000)</b>
<b>Barrow</b>	189
<b>Billington</b>	189
<b>Bolton – by B</b>	219
<b>Calderstones</b>	189
<b>Chatburn</b>	219
<b>Chipping</b>	393
<b>Clitheroe</b>	160
<b>Copster Gn</b>	108
<b>Downham</b>	219
<b>Dunsop Br</b>	298
<b>Gisburn</b>	219
<b>Grindleton</b>	219
<b>Holden</b>	219
<b>Hurst Green</b>	189
<b>Langho</b>	283
<b>Longridge</b>	150
<b>Mellor</b>	146
<b>Mellor Brook</b>	146
<b>Newton</b>	298
<b>Osbaldeston</b>	146
<b>Pendleton</b>	157
<b>Read and Simonstone</b>	107
<b>Ribchester</b>	151
<b>Rimington</b>	219
<b>Sabden</b>	189
<b>Sawley</b>	219
<b>Slaidburn</b>	298
<b>Tosside</b>	331
<b>Waddington</b>	298
<b>West Bradford</b>	219
<b>Whalley</b>	189
<b>Wilpshire</b>	107
<b>Wiswell</b>	189
<b>Worston</b>	157

**Table 5. Commuting Patterns**

	<b>% Commuting out of Borough</b>
<b>Barrow</b>	49%
<b>Billington</b>	33%
<b>Bolton – by B</b>	33%
<b>Calderstones</b>	52.2%
<b>Chatburn</b>	48.5%
<b>Chipping</b>	70.6%
<b>Clitheroe</b>	25.2%
<b>Copster Gn</b>	71.3%
<b>Downham</b>	48.5%
<b>Dunsop Br</b>	70.6%
<b>Gisburn</b>	35.8%
<b>Grindleton</b>	36.6%
<b>Holden</b>	33%
<b>Hurst Green</b>	41.5%
<b>Langho</b>	54%
<b>Longridge</b>	51%
<b>Mellor</b>	65.8%
<b>Mellor Brook</b>	65.8%
<b>Newton</b>	33%
<b>Osbaldeston</b>	65.8%
<b>Pendleton</b>	49.1%
<b>Read and Simonstone</b>	61.8%
<b>Ribchester</b>	52.2%
<b>Rimington</b>	35.8%
<b>Sabden</b>	59%
<b>Sawley</b>	36.6%
<b>Slaidburn</b>	33%
<b>Tosside</b>	35.8%
<b>Waddington</b>	36.6%
<b>West Bradford</b>	36.6%
<b>Whalley</b>	52.2%
<b>Wilpshire</b>	81.2%
<b>Wiswell</b>	49.1%
<b>Worston</b>	49.1%

Note: Commuting is here taken to mean commuting out of the Borough for work or education by those of working age.

## **A2. Analysis of Contextual and Demographic Information.**

### **Population size**

- Clitheroe and Longridge stand out as by far the largest local centres, the next most populous are Wilpshire and Langho, both themselves significantly smaller than Longridge but also appreciably larger than other settlements.
- The only remaining settlements with populations above 1000 are (ranked by size, largest first) Whalley, Billington, Mellor, Read (without Simonstone), Sabden, Ribchester and Chatburn.
- There is a group of 6 further settlements with populations between 1000 and c.500, (in order largest first): Waddington, Chipping, West Bradford, Barrow, Calderstones and Bolton by Bowland.
- All other settlements have less than 500 residents.

### **Age structure**

#### ***The 0 – 24 years group***

- More than half of all settlements (and three of the four largest) clustered within the 27% to 35% (of the settlement's total population) bracket.
- 6 settlements recorded lower than 23% of this age group, Copster Green, Holden, Hurst Green, Pendleton, Waddington and West Bradford, while Dunsop Bridge has the highest proportion of this age group

#### ***The 25 – 64 years group***

- This tranche showed the most clustering, with three quarters of all settlements falling into the bracket 64% to 55% of the total population of each settlement. Copster Green recorded the highest proportion of this group and Whalley the lowest, with Clitheroe, Chatburn and Dunsop Bridge all also lower than the main clustered group mentioned above.

#### ***The above 64 years group.***

- Calderstones had the significantly lowest proportion of this group. Most settlements fell within a 13% to 18% bracket. Those with 20% or more of their population within this group are: Chatburn, Hurst Green, Mellor, Osbaldeston, Pendleton, Waddington, West Bradford, and Whalley

### **Economic activity and employment rates**

- All but four settlements cluster into the 79% - 85% bracket for economic activity and the 78% - 83% employment bracket. These rates are all above national averages.
- The four settlements mentioned above show lower activity and employment than the rest: Calderstones, Whalley, Hurst Green and Langho and are lower than the national average.

## **Average house prices**

This data (for 2006) has not been recorded at settlement level but for larger geographic groups.

It is also important to note that, while acknowledging that absolute prices have changed since the settlement audit of 2006, the relative costs of housing between each settlement are not considered to have altered significantly.

- However those settlements with the highest average prices are (those higher than £293,000) are: Waddington, Slaidburn, Newton, Langho, Dunsop Bridge, Tosside and Chipping, which has the highest average house price in the Borough.
- The following have prices towards the lower end of the Borough spectrum (ie less than £160,000): Worston, Ribchester, Pendleton, Osbaldeston, Mellor Brook, Mellor, Longridge, Copster Green Clitheroe, Wilpshire and Read and Simonstone. Significantly three of the largest settlements in the Borough fall into this category.
- The rest of the Borough's settlements lie within the range £160,000 to £219,000

## **Out-commuter flows**

(ie commuting out of the Borough for work or education by working age residents)

- The two extremes are represented by Wilpshire, with the highest rate, possibly because of its position as an urban extension of Blackburn, with good road and other connections, and Clitheroe with the lowest rate, which could reflect the relatively higher employment opportunities available there.
- Three other settlements have particularly high commuting, Chipping, Copster Green and Dunsop Bridge.
- There are two other groups of settlements, within each of which there are relatively similar commuting flows.
- The first, relatively higher commuting group, fall into the 54% - 48% bracket and includes: Barrow, Calderstones, Chatburn, Downham, Langho, Longridge, Pendleton, Ribchester, Whalley, Wiswell and Worston.
- Within the second group, with lower commuting in the 36% - 33% bracket are: Billington, Bolton, Gisburn, Grindleton, Holden, Newton, Rimington, Sawley, Slaidburn, Tosside, Waddington, and Worston.

## **APPENDIX 2 Local Services and Facilities**

### **Analysis of Facilities and Service Provision.**

#### **1. Transport Provision**

Bolton by Bowland, Holden, Pendleton, Rimington and Worston all fare poorly for public transport with no provision at all. In addition Dunsop Bridge, Osbaldeston, Calderstones, Newton, Slaidburn and Tosside have a low frequency bus service. In total 11 of 34 settlements have either no or a low frequency bus service.

All other settlements have at least a bus stop and an hourly service during working hours Monday to Friday. The four settlements which score the maximum (Clitheroe, Whalley, Langho and Wilpshire) do so as they possess a railway station in addition to their bus services.

All the larger and most of the middle ranking settlements by size have a bus service.

Note. The bus frequency aspect of the scoring scheme was derived intuitively, hourly or more frequently within a working day being considered a reasonable provision.

#### **Scoring Scheme**

<b>Bus Stop</b>	Score 2	Available within settlement
	Score 0	If not above
<b>Bus Frequency</b>	Score 2	If service available at least on average once hourly or less Monday to Friday from 9am to 6 pm
	Score 1	If a service available on average between once an hour and once every two hours Monday to Friday from 9 am to 6 pm
	Score 0	If not above
<b>Railway Station</b>	Score 2	Available within settlement
	Score 0	If not above

**Table 6. Transport Provision**

	<b>Bus Stop</b>	<b>Service Frequency</b>	<b>Rail Station</b>	<b>Total Max = 6</b>
<b>Barrow</b>	2	2	-	4
<b>Billington</b>	2	2	-	4
<b>Bolton – by -B</b>	-	-	-	-
<b>Calderstones</b>	2	1	-	3
<b>Chatburn</b>	2	2	-	4
<b>Chipping</b>	2	2	-	4
<b>Clitheroe</b>	2	2	2	6
<b>Copster Green</b>	2	2	-	4
<b>Downham</b>	2	2	-	4
<b>Dunsop Bridge</b>	2	1	-	3
<b>Gisburn</b>	2	2	-	4
<b>Grindleton</b>	2	2	-	4
<b>Holden</b>	-	-	-	-
<b>Hurst Green</b>	2	2	-	4
<b>Langho</b>	2	2	2	6
<b>Longridge</b>	2	2	-	4
<b>Mellor</b>	2	2	-	4
<b>Mellor Brook</b>	2	2	-	4
<b>Newton</b>	2	1	-	3
<b>Osbaldeston</b>	2	-	-	2
<b>Pendleton</b>	-	-	-	-
<b>Read and Simonstone</b>	2	2	-	4
<b>Ribchester</b>	2	2	-	4
<b>Rimington</b>	-	-	-	-
<b>Sabden</b>	2	2	-	4
<b>Sawley</b>	2	2	-	4
<b>Slaidburn</b>	2	1	-	3
<b>Tosside</b>	2	1	-	3
<b>Waddington</b>	2	2	-	4
<b>West Bradford</b>	2	2	-	4
<b>Whalley</b>	2	2	2	6
<b>Wilpshire</b>	2	2	2	6
<b>Wiswell</b>	2	2	-	4
<b>Worston</b>	-	-	-	-

## 2. Convenience Facilities

### Analysis

Copster Green, Grindleton, Pendleton, Rimington, Sawley, West Bradford, Wiswell and Worston all have no convenience provision, while Calderstones, Holden, Osbaldeston and Wilpshire have only one of the three services. In all 12 of 34 settlements have no or little convenience service provision.

The best served settlements, with all three services, are: Clitheroe, Langho, Longridge, Mellor, Read and Whalley. Significantly this group again contains the larger settlements in the Borough by population. However this means that even for three basic convenience services only 6 out of 34 settlements have full provision.

### Scoring scheme

<b>Food shop-store</b>	Score 2	If available within settlement
	Score 1	If within 400m of settlement boundary
	Score 0	If not above
<b>Post Office</b>	Score 2	If available within settlement boundary
	Score 1	If within 800m of settlement boundary
	Score 0	If not above
<b>Chemist</b>	Score 2	If available within settlement boundary
	Score 1	If within 800m of settlement boundary
	Score 0	If not above

**Table 7. Convenience Facilities**

	<b>Food Shop/ Store</b>	<b>Post Office</b>	<b>Chemist</b>	<b>Total Max = 6</b>
<b>Barrow</b>	2	-	2	4
<b>Billington</b>	2	-	-	2
<b>Bolton – by -B</b>	2	2	-	4
<b>Calderstones</b>	2	-	-	2
<b>Chatburn</b>	2	2	-	4
<b>Chipping</b>	2	2	-	4
<b>Clitheroe</b>	2	2	2	6
<b>Copster Green</b>	-	-	-	-
<b>Downham</b>	2	2	-	4
<b>Dunsop Bridge</b>	2	2	-	4
<b>Gisburn</b>	2	2	-	4
<b>Grindleton</b>	-	-	-	-
<b>Holden</b>	-	1	-	1
<b>Hurst Green</b>	2	2	-	4
<b>Langho</b>	2	2	2	6
<b>Longridge</b>	2	2	2	6
<b>Mellor</b>	2	2	2	6
<b>Mellor Brook</b>	2	2	-	4
<b>Newton</b>	-	-	-	-
<b>Osbaldeston</b>	-	2	-	2
<b>Pendleton</b>	-	-	-	-
<b>Read and Simonstone</b>	2/1	2	2/1	6/4
<b>Ribchester</b>	2	2	-	4
<b>Rimington</b>	-	-	-	-
<b>Sabden</b>	2	2	-	4
<b>Sawley</b>	-	-	-	-
<b>Slaidburn</b>	2	2	-	4
<b>Tosside</b>	2	2	-	4
<b>Waddington</b>	2	2	-	4
<b>West Bradford</b>	-	-	-	-
<b>Whalley</b>	2	2	2	6
<b>Wilpshire</b>	-	2	-	2
<b>Wiswell</b>	-	-	-	-
<b>Worston</b>	-	-	-	-

### 3. Community Facilities

#### Analysis

Most places seem well served with these facilities, with broadband access being ubiquitous and park, play areas and village halls present in most settlements. Libraries, perhaps understandably, are less prevalent.

However the following settlements fare worst : Calderstones, Copster Green, Holden, and Wiswell

The following had full provision: Chatburn, Clitheroe, Longridge, and Whalley.

#### Scoring scheme

<b>Library</b>	Score 2	If available within settlement
	Score 1	If within 800m of settlement boundary
	Score 0	If not above
<b>Village hall</b>	Score 2	If within settlement boundary
	Score 1	If within 600m of settlement boundary
	Score 0	If not above
<b>Equipped Childrens' Play Area</b>	Score 2	If available within settlement boundary
	Score 1	If within 400m of settlement boundary
	Score 0	If not above
<b>Formal Park</b>	Score 2	If available within settlement boundary
	Score 1	If within 800m of settlement boundary
	Score 0	If not above
<b>Broadband Access</b>	Score 2	If available within settlement
	Score 0	If not above

**Table 8. Community Facilities**

	<b>Library</b>	<b>Vill Hall</b>	<b>Play Area</b>	<b>Park</b>	<b>B-band</b>	<b>Total Max = 10</b>
<b>Barrow</b>	-	-	2	-	2	4
<b>Billington</b>	-	-	2	2	2	6
<b>Bolton – by B</b>	-	2	-	2	2	6
<b>Calderstones</b>	-	-	2	-	2	2
<b>Chatburn</b>	2	2	2	2	2	10
<b>Chipping</b>	-	2	2	2	2	8
<b>Clitheroe</b>	2	2	2	2	2	10
<b>Copster Gn</b>	-	-	-	-	2	2
<b>Downham</b>	1	2	-	2	2	7
<b>Dunsop Br</b>	-	2	2	2	2	8
<b>Gisburn</b>	-	2	-	2	2	6
<b>Grindleton</b>	-	-	2	2	2	6
<b>Holden</b>	-	-	-	-	2	-
<b>Hurst Green</b>	-	2	2	2	2	8
<b>Langho</b>	-	2	-	2	2	6
<b>Longridge</b>	2	2	2	2	2	10
<b>Mellor</b>	2	2	2	2	2	8
<b>Mellor Brook</b>	-	2	-	-	2	4
<b>Newton</b>	-	2	-	2	2	6
<b>Osbaldeston</b>	-	-	-	2	2	4
<b>Pendleton</b>	-	2	2	2	2	8
<b>Read and Simonstone</b>	2/2	- / -	- / -	2	2	6/6
<b>Ribchester</b>	-	2	2	2	2	8
<b>Rimington</b>	-	2	-	2	2	6
<b>Sabden</b>	-	-	2	2	2	6
<b>Sawley</b>	-	2	-	-	2	4
<b>Slaidburn</b>	-	2	-	2	2	6
<b>Tosside</b>	-	2	-	-	2	4
<b>Waddington</b>	-	2	2	2	2	8
<b>West Bradford</b>	-	2	2	-	2	6
<b>Whalley</b>	2	2	2	2	2	10
<b>Wilpshire</b>	-	-	2	2	2	6
<b>Wiswell</b>	-	-	-	-	2	2
<b>Worston</b>	-	2	-	-	2	4

## 4. Health Provision

### Analysis

22 of 34 settlements showed poor provision with only 9 having full provision, including all the major population centres.

### Scoring scheme

#### GP Surgery

- Score 2 If available within settlement boundary  
 Score 1 If within 1000m of settlement boundary  
 Score 0 If not above

**Table 9. GP Provision**

	<b>GP Surgery Max = 2</b>
<b>Barrow</b>	-
<b>Billington</b>	1
<b>Bolton – by B</b>	2
<b>Calderstones</b>	-
<b>Chatburn</b>	-
<b>Chipping</b>	-
<b>Clitheroe</b>	2
<b>Copster Gn</b>	-
<b>Downham</b>	-
<b>Dunsop Br</b>	2
<b>Gisburn</b>	-
<b>Grindleton</b>	-
<b>Holden</b>	1
<b>Hurst Green</b>	-
<b>Langho</b>	2
<b>Longridge</b>	2
<b>Mellor</b>	2
<b>Mellor Brook</b>	1
<b>Newton</b>	-
<b>Osbaldeston</b>	-
<b>Pendleton</b>	-
<b>Read and Simonstone</b>	- / -
<b>Ribchester</b>	-
<b>Rimington</b>	-
<b>Sabden</b>	2
<b>Sawley</b>	-
<b>Slaidburn</b>	2
<b>Tosside</b>	-
<b>Waddington</b>	-
<b>West Bradford</b>	-
<b>Whalley</b>	2
<b>Wilpshire</b>	-
<b>Wiswell</b>	-
<b>Worston</b>	-

## 5. Education Provision

### Analysis

Most settlements (21 of 34) still contain a Primary School. Perhaps understandably the provision of Higher Education is not common in such a rural area. Both the largest settlements have Secondary provision but only 6 settlements have a Nursery school in addition to their Primary provision: Clitheroe, Downham, Longridge, Ribchester, West Bradford and Whalley.

### Scoring scheme

<b>Nursery (public or private)</b>	Score 2	If available within settlement boundary
	Score 1	If within 600m of settlement boundary
	Score 0	If not above
<b>Primary School</b>	Score 2	If available within settlement boundary
	Score 1	If available within 600m of settlement boundary
	Score 0	If not above
<b>Secondary School</b>	Score 2	If within 1500m of settlement boundary
	Score 0	If not above
<b>College or further education</b>	Score 2	If within 4000m of settlement boundary
	Score 0	If not above

**Table 10. Education Provision**

	<b>Nursery School</b>	<b>Primary School</b>	<b>Secondary School</b>	<b>Further/ Higher Education</b>	<b>Total Max = 8</b>
<b>Barrow</b>	-	2	-	-	2
<b>Billington</b>	-	-	2	1	3
<b>Bolton – by B</b>	-	2	-	-	2
<b>Calderstones</b>	-	-	-	-	-
<b>Chatburn</b>	-	2	-	-	2
<b>Chipping</b>	-	2	-	-	2
<b>Clitheroe</b>	2	2	2	2	8
<b>Copster Gn</b>	1	1	-	-	2
<b>Downham</b>	2	-	-	-	2
<b>Dunsop Br</b>	-	2	-	-	2
<b>Gisburn</b>	-	2	-	-	2
<b>Grindleton</b>	-	2	1	-	3
<b>Holden</b>	-	-	-	-	-
<b>Hurst Green</b>	-	2	-	-	2
<b>Langho</b>	-	2	-	1	3
<b>Longridge</b>	2	2	2	-	6
<b>Mellor</b>	-	2	-	-	2
<b>Mellor Brook</b>	-	-	-	-	-
<b>Newton</b>	-	-	-	-	-
<b>Osbaldeston</b>	-	2	-	-	2
<b>Pendleton</b>	-	-	-	-	-
<b>Read and Simonstone</b>	- / -	2 / 2	- / -	- / -	2 / 2
<b>Ribchester</b>	2	2	-	-	4
<b>Rimington</b>	-	-	-	-	-
<b>Sabden</b>	-	2	-	-	2
<b>Sawley</b>	-	-	-	1	1
<b>Slaidburn</b>	-	2	-	-	2
<b>Tosside</b>	-	-	-	-	-
<b>Waddington</b>	-	2	-	-	2
<b>West Bradford</b>	2	2	-	-	4
<b>Whalley</b>	2	2	1	-	5
<b>Wilpshire</b>	-	-	-	-	-
<b>Wiswell</b>	-	-	-	-	-
<b>Worston</b>	-	-	-	-	-

## 6. Employment

### Analysis

This scheme tried to incorporate two elements, access by a settlement to a local centre for employment and its services, and attempting to gain a measure of the local business activity in the settlement and its immediate area by considering the number of businesses located there. In using this scheme it is understood that many residents will not work in local firms or businesses. Taking these measures together this scheme hopes to gain some idea of economic activity and help give a picture of a place's economic sustainability. It should also be remembered that business numbers do not take into account the size of individual firms.

Considering the combined scores nearly half (16 of 34) of the settlements scored 1 or less, indicating low access and relatively low business numbers in these places. Only three places scored either 4 or 5, Clitheroe, Longridge and Whalley, possibly reflecting their retail importance.

Considering the accessibility criterion in isolation only 12 of 34 settlements received a maximum score here while 12 (roughly one in three) received zero, indicating poor access to their local Key Service Centre.

Holden, Newton, Tosside and Worston scored zero in for both measures.

### Scoring scheme

<b>Access to local Key Service Centre</b>	Score 2	If within 2km of settlement boundary
	Score 1	If between 2 and 5 km of settlement boundary
	Score 0	If not above
<b>Employment</b>	Score 3	If more than 100 businesses within settlement
	Score 2	If between 100 and 50 businesses within settlement
	Score 1	If between 50 and 10 businesses within settlement
	Score 0	If fewer than 10 businesses within settlement

**Table 11. Employment**

	<b>Access to Key Service Centre</b>	<b>Number of Businesses</b>	<b>Total Max = 5</b>
<b>Barrow</b>	2	1	3
<b>Billington</b>	2	1	3
<b>Bolton – by B</b>	-	1	1
<b>Calderstones</b>	2	-	2
<b>Chatburn</b>	1	2	3
<b>Chipping</b>	-	1	1
<b>Clitheroe</b>	2	3	5
<b>Copster Gn</b>	2	-	2
<b>Downham</b>	1	-	1
<b>Dunsop Br</b>	-	1	1
<b>Gisburn</b>	-	2	2
<b>Grindleton</b>	1	1	2
<b>Holden</b>	-	-	-
<b>Hurst Green</b>	-	1	1
<b>Langho</b>	2	1	3
<b>Longridge</b>	2	3	5
<b>Mellor</b>	1	1	2
<b>Mellor Brook</b>	1	-	1
<b>Newton</b>	-	-	-
<b>Osbaldeston</b>	1	-	1
<b>Pendleton</b>	2	-	2
<b>Read and Simonstone</b>	1 / 1	1 / 1	1 / 1
<b>Ribchester</b>	-	2	2
<b>Rimington</b>	-	1	1
<b>Sabden</b>	1	1	2
<b>Sawley</b>	1	-	1
<b>Slaidburn</b>	-	1	1
<b>Tosside</b>	-	-	-
<b>Waddington</b>	2	1	3
<b>West Bradford</b>	1	-	1
<b>Whalley</b>	2	2	4
<b>Wilpshire</b>	2	1	3
<b>Wiswell</b>	2	-	2
<b>Worston</b>	-	-	-

### APPENDIX 3 Scoring Scheme Sources

As quoted within “Settlement Hierarchy and Sustainable Rural Settlements”, Pendle Borough Council, 2008

Provision/Facility	Scoring Source (see list below)
Bus Stop	1,2,4
Service Frequency	*
Railway Station	2,4
Food Store	2,4
Post Office	1,3,4
Chemist	*
Library	4
Village/Community Hall	2
Equipped Play Area	1,5
Park	1
Broadband	*
GP Surgery	1,3,4
Nursery	1
Primary School	1,2,4
Secondary School	1,2,4
College of Higher/Further Education	1
Access to Key Services	1,2,4
Number of Businesses	1

#### List of Scoring Sources

1. Shaping Neighbourhoods: A Guide for Health, Sustainability and Vitality  
- Barton H., Grant M, and Guise R. (2003)
  2. Sustainable Settlements: A Guide for Planners, Designers and Developers  
- University of West of England (1995)
  3. Exploring Urban Potential for Housing; The Guide  
- ENTEC/NWRA (2003)
  4. Joint Lancashire Structure Plan Parking Standards: Accessibility Questionnaire  
- Lancashire County Council (2005)
  - 5 National Playing Field Association
- \* No source available criterion chosen intuitively to reflect sensible local circumstances

## **2006 Ribble Valley Settlement Audit**

Also, in addition to the above, the following key facilities were identified in the audit and were drawn from ODPM “Sustainable Communities: Building for the Future” (2003) as indicators of settlement sustainability.

GP

Chemist

General Convenience Store

Access to Broadband

Nursery, Primary and Secondary Schools

Further or Higher Education Provision

Community Hall

Library