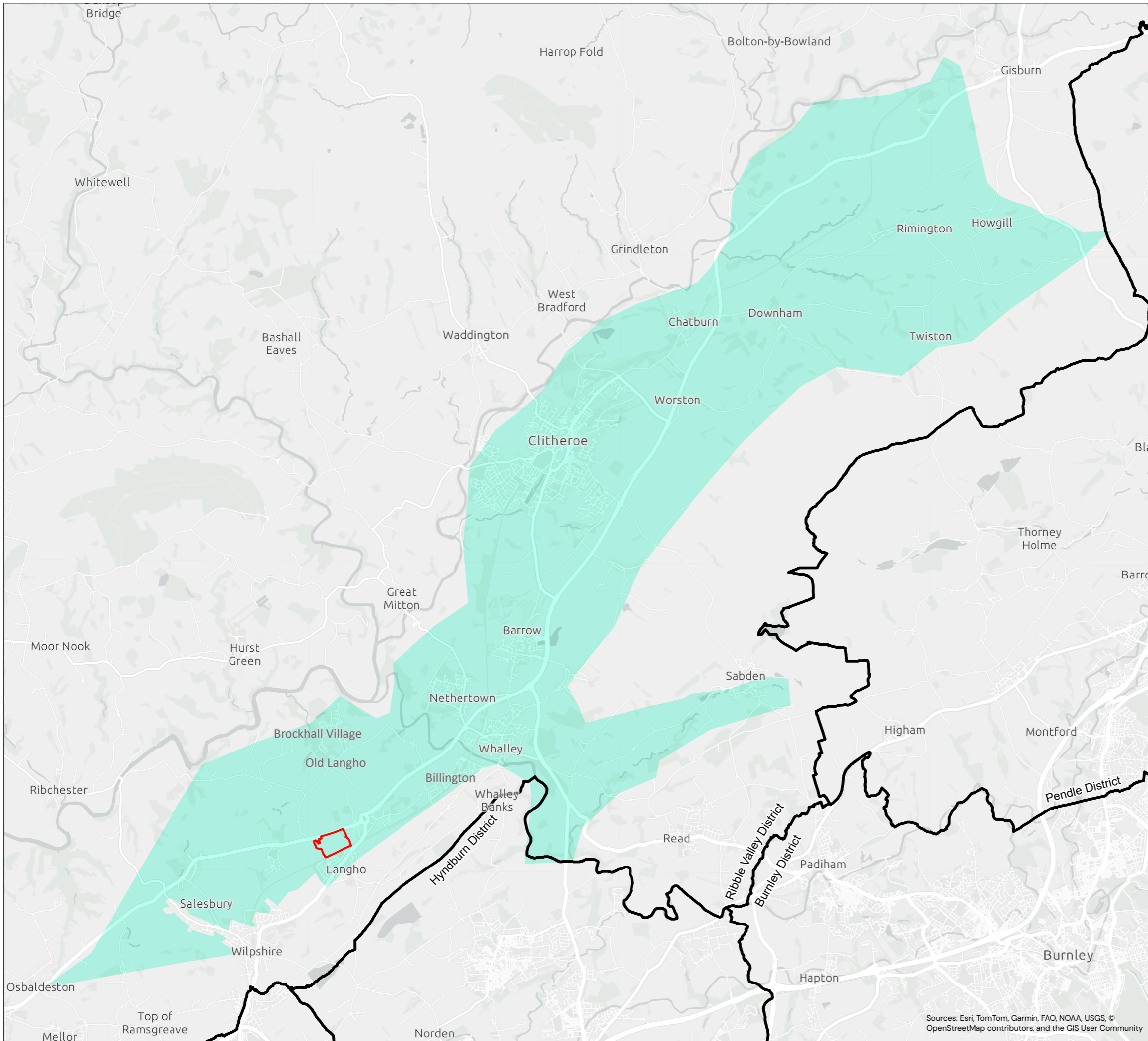


All Intellectual Property Rights (including but not limited to copyright) subsisting in or arising out of this drawing and the building works depicted are owned by Pegasus Planning Group Ltd (Pegasus Group) and may not be copied, adapted, disseminated, reproduced and/or otherwise used without a written licence. Pegasus Group accepts no liability for any use of this drawing other than for its original purpose and by the original client except in circumstances where approval for use has been provided by Pegasus Group in writing. Use only written dimensions. Drawing prepared for planning application purposes only. Do not scale (or use) for construction, sales or any other purpose. Any queries to be reported to Pegasus Group for clarification. Copyright © Pegasus Planning Group Limited 2026. Use of this drawing is subject to the Terms & Conditions available at [pegasusgroup.co.uk](https://www.pegasusgroup.co.uk). © Crown copyright and database rights 2026. Ordnance Survey AC00000810122.



**KEY**

- Site Boundary
- District Boundary

**Lancashire Landscape Character Assessment (2000)**

Landscape Character Areas

- Lower Ribblesdale (Clitheroe to Gisburn)



REV	DATE	DESCRIPTION

**LANDSCAPE CHARACTER PLAN - LOWER RIBBLESDALE (CLITHEROE TO GISBURN)**

**LONGSIGHT ROAD, LANGHO**  
 HALLAM LAND MANAGEMENT LTD

DATE	SCALE	DRAWN	APPROVED
29/04/2026	1:70,000@A3	NC	AC
SHEET	REV	N	O
-	A	▲	1.5KM

DRAWING NUMBER  
 P24\_2318\_EN\_16



Sources: Esri, TomTom, Garmin, FAO, NOAA, USGS, © OpenStreetMap contributors, and the GIS User Community